



شركة الاستثمار الوطنية
NATIONAL INVESTMENTS COMPANY

Bursa Kuwait – Daily Market Report MENA Securities – Research & Studies Dep.

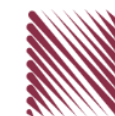
18th October 2022



www.nic.com.kw

DAILY MARKET COVERAGE REPORT

NIC MENA SECURITIES - RESEARCH AND STUDIES DEP



Kuwait Market Watch

Tuesday, October 18, 2022

Index	Close	DTD Chg Net	DTD (%)	YTD (%)	52W High	52W Low	MKT CAP Bn (KD)	PBV (X)	PE (X)	DY (%)
All Share Index	7,088.22	139.95	2.01%	0.64%	8,472.15	6,788.83	45.31	2.00	30.63	4.19
Premier Index	7,929.34	162.30	2.09%	3.80%	9,437.37	7,343.90	36.40	2.20	31.54	4.61
Main Index	5,327.84	89.45	1.71%	-9.49%	6,600.62	5,190.37	8.91	1.16	26.90	2.46
NIC 50 Index	8,887.15	183.57	2.11%	4.28%	10,553.82	8,195.69	35.70	2.20	31.54	4.61

Index	Value Mn(KD)	Volume (Mn share)
All Share Index	58.80	204.52
Premier Index	48.58	99.33
Main Index	10.22	105.19
NIC 50 Index	55.37	164.99

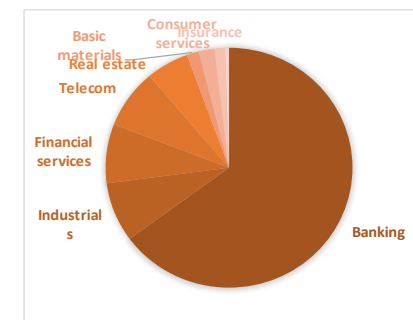
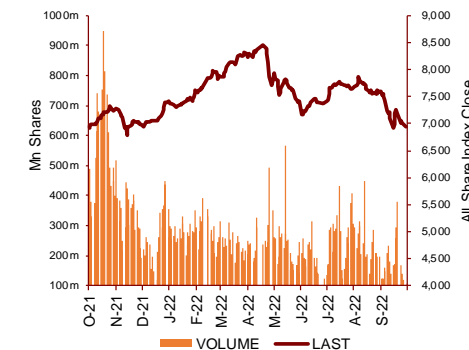
Market Breadth	UP	Down	No Chg
All Share Index	87	23	44
Premier Index	23	1	2
Main Index	64	22	42
NIC 50 Index	46	2	2

Today's Top 5 Gainer %	Close KD	Value KD	DTD (%)
Kuwait Finance and Investment	0.065	3,613.089	17.00%
Al-Enmaa Real Estate	0.055	161,188	10.89%
National Petroleum Services	0.727	6,383	9.16%
Al Ahli Bank of Kuwait	0.309	172,714.762	8.42%
Kuwait Business Town Real Esta	0.051	54,627.580	8.28%

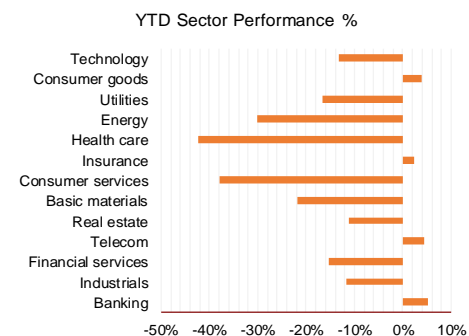
Today's Top 5 Loser %	Close KD	Value KD	DTD (%)
Al Manar Financing and Leasing	0.053	5	-5.00%
Al Ahleia Insurance	0.535	268	-4.97%
Warba Capital Holding	0.088	29,470	-4.25%
Hayat Communications	0.054	939	-3.78%
Oula Fuel Marketing	0.141	33,109	-3.42%

Today's Top 5 by Value	Close KD	Trade Val Mn(KD)	DTD (%)
Kuwait Finance House	0.790	16.64	3.27%
Agility Public Warehousing	0.722	11.51	6.96%
National Bank of Kuwait	1.016	3.78	0.30%
National Consumer Holding	0.109	2.46	1.87%
Kuwait International Bank	0.189	2.46	0.53%

Top 5 by Volume	Close KD	Trade Vol Mn(Shrs)	DTD (%)
National Consumer Holding	0.109	22.46	1.87%
Kuwait Finance House	0.790	21.17	3.27%
Agility Public Warehousing	0.722	16.24	6.96%
Kuwait International Bank	0.189	13.02	0.53%
GFH Financial Group	0.077	12.71	3.49%



Sector	Close	DTD Chg Net	DTD (%)	YTD (%)	52W High	52W Low	MKT CAP Bn (KD)	PBV (X)	PE (X)	DY (%)
Banking	1,735.88	30.310	1.78%	5.1%	1,992.2	1,557.8	29.036	1.62	24.47	1.93
Industrials	1,050.27	40.980	4.06%	-11.6%	1,443.6	976.3	3.587	0.99	19.41	3.97
Financial services	1,240.50	34.790	2.89%	-15.3%	1,678.3	1,190.4	3.569	0.99	29.80	3.08
Telecom	1,162.97	26.020	2.29%	4.4%	1,514.7	1,055.9	3.559	1.30	13.38	3.05
Real estate	1,202.24	23.800	2.02%	-11.2%	1,438.0	1,155.8	2.511	0.69	35.44	1.37
Basic materials	814.84	14.040	1.75%	-21.9%	1,233.3	800.8	0.710	1.20	8.70	6.61
Consumer services	459.77	6.140	1.35%	-38.0%	791.7	449.8	0.921	2.24	26.91	1.77
Insurance	1,555.81	-11.810	-0.75%	2.2%	1,675.7	1,434.5	0.620	0.83	44.64	5.26
Health care	459.73	0.000	0.00%	-42.3%	821.7	420.4	0.228	15.73	12.57	0.96
Energy	1,034.17	35.670	3.57%	-30.1%	1,592.9	975.7	0.209	0.81	21.11	2.44
Utilities	500.00	0.000	0.00%	-16.7%	650.0	494.7	0.209	2.14	14.55	9.47
Consumer goods	1,391.30	1.130	0.08%	4.0%	1,641.0	1,165.5	0.139	0.90	37.91	2.17
Technology	600.19	7.280	1.23%	-13.3%	843.9	539.1	0.008	0.73	NM	-
	7,088.22	139.95	2.01%	0.6%	8,472.2	6,788.8	45.31	2.00	30.63	4.19



DAILY MARKET COVERAGE REPORT

NIC MENA SECURITIES - RESEARCH AND STUDIES DEP

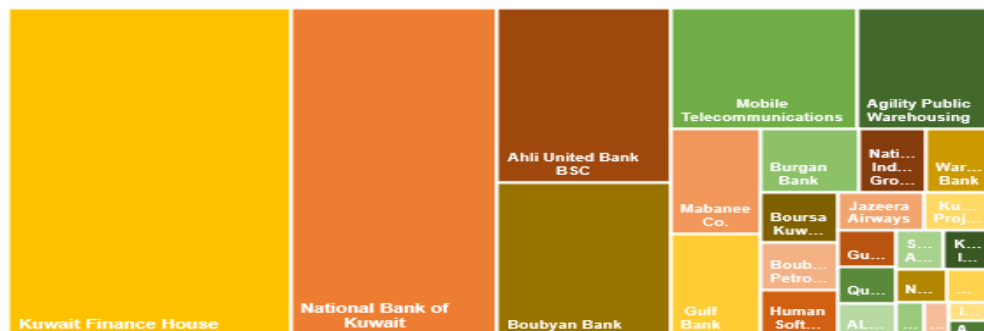


Premier Market

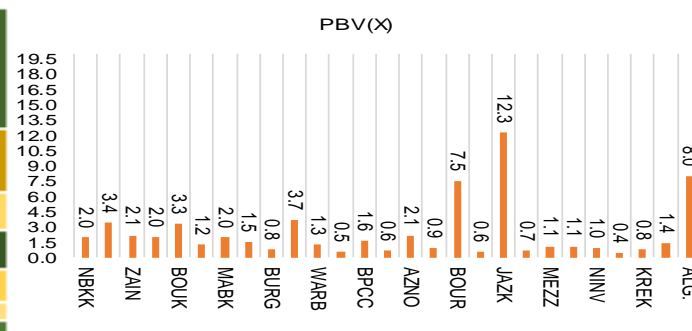
Tuesday, October 18, 2022

Premier Market	Price			Valuation Multiples			MKT Cap	Price Performance		Trading Indicators		ROE	ROA	52 Week (KD)		MKT Cap
	Close (KD)	Day Δ	Day % Δ	PBV(X)	PE(X)	DY%	Mn KD	MTD(%)	YTD (%)	Value (Mn KD)	(Mn Shrs)	(%)	(%)	High	Low	%
National Bank of Kuwait	1.016	0.003	0.30%	1.97	18.37	2.40	7,673	4%	7%	3.78	3.72	10.9%	1.4%	1.104	0.902	21.08%
Kuwait Finance House	0.790	0.025	3.27%	3.38	26.83	1.43	10,453	-6%	4%	16.64	21.17	12.8%	1.6%	1.039	0.720	28.72%
Mobile Telecommunications	0.588	0.015	2.62%	2.14	13.90	5.76	2,544	-2%	-1%	2.41	4.13	15.6%	4.3%	0.698	0.564	6.99%
Ahli United Bank BSC	0.305	0.000	0.00%	2.04	17.93	2.72	3,400	0%	21%	0.00	0.00	11.3%	1.6%	0.336	0.240	9.34%
Boubyan Bank	0.805	0.014	1.77%	3.25	53.07	0.57	3,009	5%	13%	0.93	1.16	6.7%	0.8%	0.965	0.681	8.27%
Agility Public Warehousing	0.722	0.047	6.96%	1.23	55.45	2.47	1,824	8%	-8%	11.51	16.24	2.7%	2.2%	1.062	0.634	5.01%
Mabaneer Co.	0.855	0.011	1.30%	1.95	18.09	1.56	1,062	-1%	14%	0.65	0.77	11.2%	5.4%	0.910	0.717	2.92%
Gulf Bank	0.330	0.009	2.80%	1.54	18.68	2.08	1,045	10%	24%	1.56	4.77	8.5%	0.8%	0.385	0.227	2.87%
Burgan Bank	0.214	0.005	2.39%	0.79	18.12	2.28	703	-4%	-10%	0.36	1.69	4.3%	0.7%	0.307	0.205	1.93%
Human Soft Holding	3.300	0.060	1.85%	3.65	7.63	12.35	401	1%	2%	0.27	0.08	48.7%	39.9%	3.704	3.006	1.10%
Warba Bank	0.230	0.003	1.32%	1.26	27.25	0.00	460	4%	-16%	1.37	6.00	4.8%	0.6%	0.298	0.216	1.26%
Qurain Petrochemical Industries	0.218	0.008	3.81%	0.54	8.34	8.57	234	-20%	-37%	0.36	1.68	6.4%	5.2%	0.403	0.210	0.64%
Boubyan Petrochemical	0.797	0.007	0.89%	1.63	9.02	7.59	416	-4%	-6%	0.14	0.18	19.1%	10.1%	1.125	0.769	1.14%
Kuwait Projects Company Holding	0.117	0.004	3.54%	0.62	300.00	4.42	286	-12%	-18%	0.21	1.82	0.2%	0.1%	0.215	0.112	0.79%
Shamal Az-Zour Al-Oula Power & Water	0.190	0.000	0.00%	2.14	14.55	9.47	209	-3%	-17%	0.06	0.34	19.1%	2.9%	0.247	0.188	0.57%
National Industries Group Holding	0.223	0.010	4.69%	0.94	5.13	5.22	481	-3%	-7%	1.73	7.83	15.2%	6.5%	0.314	0.207	1.32%
Boursa Kuwait Securities Co	2.175	0.057	2.69%	7.49	23.26	3.07	437	5%	8%	0.27	0.12	33.9%	22.2%	2.870	1.800	1.20%
Kuwait International Bank	0.189	0.001	0.53%	0.60	30.05	2.05	200	-5%	-10%	2.46	13.02	1.9%	0.4%	0.259	0.186	0.55%
Jazeera Airways	1.700	-0.002	-0.12%	12.29	13.75	2.70	374	3%	32%	0.87	0.51	164.8%	12.1%	2.099	0.922	1.03%
Alafco Aviation Lease and Finance	0.174	0.003	1.75%	0.65	NM	0.00	166	0%	-20%	0.06	0.36	-15.9%	-3.4%	0.256	0.167	0.46%
Mezzan Holding	0.370	0.008	2.21%	1.08	37.91	4.33	115	-1%	-36%	0.41	1.12	2.8%	1.3%	0.629	0.358	0.32%
Gulf Cable and Electrical Industries	1.130	0.037	3.39%	1.05	10.48	5.49	235	6%	30%	0.21	0.18	11.0%	NM	1.850	0.840	0.65%
National Investments	0.238	0.009	3.93%	0.95	8.90	19.65	190	3%	9%	0.77	3.18	10.9%	8.9%	0.475	0.200	0.52%
Alimtia Investment Group	0.074	0.002	2.78%	0.43	NM	12.50	76	-2%	-37%	0.05	0.70	-1.0%	-0.1%	0.140	0.069	0.21%
Kuwait Real Estate	0.106	0.004	3.92%	0.77	12.91	2.86	98	5%	-39%	0.75	7.22	6.0%	2.5%	0.187	0.097	0.27%
Integrated Holding	0.347	0.002	0.58%	1.43	26.53	2.90	88	-9%	-6%	0.24	0.70	5.4%	3.4%	0.478	0.335	0.24%
ALI ALGanim	0.792	0.001	0.13%	7.96	12.42	0.00	220	1%	nm	0.50	0.64	27.8%	10.9%	0.966	0.750	0.60%
Total		162.30	2.09%	2.20	31.54	4.61	36,398	-0.5%	3.8%	48.58	98.69					100%

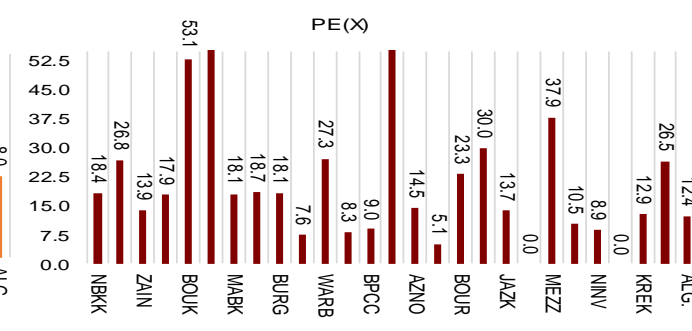
Market Capitalization



Price to Book Value

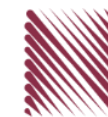


Price to Earning Value

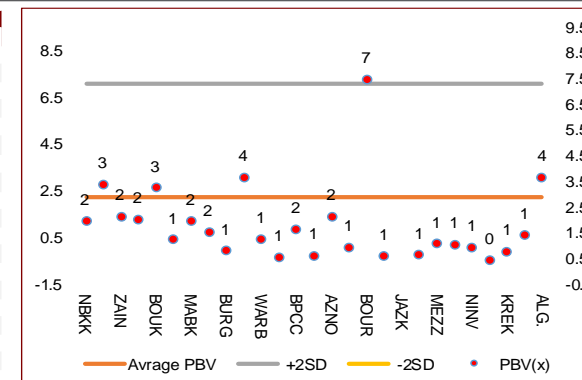


DAILY MARKET COVERAGE REPORT

NIC MENA SECURITIES - RESEARCH AND STUDIES DEP



Premier Market Company	Price			Valuation Multiples			MKT Cap Mn KD	Price Performance		ROE (%)	ROA (%)
	Close (KD)	Day Δ	Day % Δ	PBV(X)	PE(X)	DY%		MTD(%)	YTD (%)		
National Bank of Kuwait	1.016	0.003	0.30%	1.97	18.4	2.40	7,673	4.1%	7.0%	10.9%	1.4%
Kuwait Finance House	0.790	0.025	3.27%	3.38	26.8	1.43	10,453	-6.1%	4.4%	12.8%	1.6%
Mobile Telecommunications	0.588	0.015	2.62%	2.14	13.9	5.76	2,544	-2.1%	-1.2%	15.6%	4.3%
Ahli United Bank BSC	0.305	0.000	0.00%	2.04	17.9	2.72	3,400	0.0%	20.7%	11.3%	1.6%
Boubyan Bank	0.805	0.014	1.77%	3.25	53.1	0.57	3,009	5.2%	13.0%	6.7%	0.8%
Agility Public Warehousing	0.722	0.047	6.96%	1.23	55.5	2.47	1,824	8.1%	-8.3%	2.7%	2.2%
Mabane Co.	0.855	0.011	1.30%	1.95	18.1	1.56	1,062	-0.9%	14.3%	11.2%	5.4%
Gulf Bank	0.330	0.009	2.80%	1.54	18.7	2.08	1,045	10.0%	24.2%	8.5%	0.8%
Burgan Bank	0.214	0.005	2.39%	0.79	18.1	2.28	703	-3.6%	-10.5%	4.3%	0.7%
Human Soft Holding	3.300	0.060	1.85%	3.65	7.6	12.35	401	0.8%	2.4%	48.7%	39.9%
Warba Bank	0.230	0.003	1.32%	1.26	27.3	0.00	460	4.1%	-16.1%	4.8%	0.6%
Qurain Petrochemical Industries	0.218	0.008	3.81%	0.54	8.3	8.57	234	-19.6%	-37.2%	6.4%	5.2%
Boubyan Petrochemical	0.797	0.007	0.89%	1.63	9.0	7.59	416	-4.0%	-6.5%	19.1%	10.1%
Kuwait Projects Company Holding	0.117	0.004	3.54%	0.62	300.0	4.42	286	-12.0%	-17.6%	0.2%	0.1%
Shamal Az-Zour Al-Oula Power & Water	0.190	0.000	0.00%	2.14	14.5	9.47	209	-2.6%	-16.7%	19.1%	2.9%
National Industries Group Holding	0.223	0.010	4.69%	0.94	5.1	5.22	481	-2.6%	-7.5%	15.2%	6.5%
Boursa Kuwait Securities Co	2.175	0.057	2.69%	7.49	23.3	3.07	437	4.6%	7.7%	33.9%	22.2%
Kuwait International Bank	0.189	0.001	0.53%	0.60	30.0	2.05	200	-4.5%	-9.8%	1.9%	0.4%
Jazeera Airways	1.700	-0.002	-0.12%	12.29	13.7	2.70	374	2.7%	31.8%	164.8%	12.1%
Alafco Aviation Lease and Finance	0.174	0.003	1.75%	0.65	NM	0.00	166	0.0%	-20.2%	-15.9%	-3.4%
Mezzan Holding	0.370	0.008	2.21%	1.08	37.9	4.33	115	-1.1%	-35.9%	2.8%	1.3%
Gulf Cable and Electrical Industries	1.130	0.037	3.39%	1.05	10.5	5.49	235	5.6%	29.7%	11.0%	9.0%
National Investments	0.238	0.009	3.93%	0.95	8.9	19.65	190	3.0%	8.7%	10.9%	8.9%
Alimtiq Investment Group	0.074	0.002	2.78%	0.43	NM	12.50	76	-2.0%	-37.3%	-1.0%	-0.1%
Kuwait Real Estate	0.106	0.004	3.92%	0.77	12.9	2.86	98	5.0%	-39.0%	6.0%	2.5%
Integrated Holding	0.347	0.002	0.58%	1.43	26.5	2.90	88	-8.7%	-6.2%	5.4%	3.4%
ALI ALGanim	0.792	0.001	0.13%	3.66	12.4	0.00	220	0.9%	nm	27.8%	10.9%
Total	162.30	2.09%	2.20	31.54	4.61	36,178	-0.5%	3.8%			



Premier Market Discription	Price			Moving Average		RSI 14 Day	MKT Cap Mn KD	Price Performance		52 Week (KD)	
	Close (KD)	Day Δ	Day % Δ	50 Day	200 Day			MTD(%)	YTD (%)	High	Low
Premier Index	7,929	162.30	2.09%	8,352	8,425	37	36,178	-0.5%	3.5%	9,437	7,344

Top 5 Performrs (Today's Price Change)

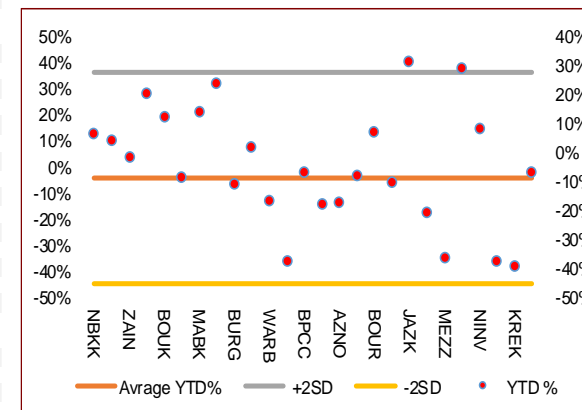
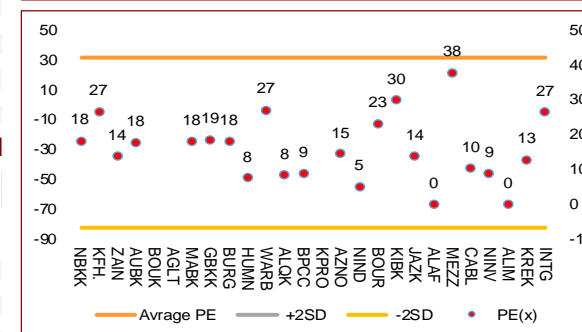
Agility Public Warehousing	0.722	0.047	6.96%	0.782	0.857	60	1,824	8.1%	-8.3%	1.062	0.634
National Industries Group Holding	0.223	0.010	4.69%	0.256	0.259	38	481	-2.6%	-7.5%	0.314	0.207
National Investments	0.238	0.009	3.93%	0.270	0.313	52	190	3.0%	8.7%	0.475	0.200
Kuwait Real Estate	0.106	0.004	3.92%	0.117	0.148	50	98	5.0%	-39.0%	0.187	0.097
Qurain Petrochemical Industries	0.218	0.008	3.81%	0.296	0.346	16	234	-19.6%	-37.2%	0.403	0.210

Middel Performrs (Today's Price Change)

Kuwait Projects Company Holding	0.117	0.004	3.54%	0.145	0.163	30	286	-12.0%	-17.6%	0.215	0.112
Gulf Cable and Electrical Industries	1.130	0.037	3.39%	1.322	1.318	54	235	5.6%	29.7%	1.850	0.840
Kuwait Finance House	0.790	0.025	3.27%	0.863	0.872	36	10,453	-6.1%	4.4%	1.039	0.720
Gulf Bank	0.330	0.009	2.80%	0.335	0.318	64	1,045	10.0%	24.2%	0.385	0.227
Alimtiq Investment Group	0.074	0.002	2.78%	0.086	0.109	40	76	-2.0%	-37.3%	0.140	0.069
Boursa Kuwait Securities Co	2.175	0.057	2.69%	2.280	2.358	54	437	4.6%	7.7%	2.870	1.800
Mobile Telecommunications	0.588	0.015	2.62%	0.598	0.611	59	2,544	-2.1%	-1.2%	0.698	0.564
Burgan Bank	0.214	0.005	2.39%	0.232	0.254	39	703	-3.6%	-10.5%	0.307	0.205
Mezzan Holding	0.370	0.008	2.21%	0.402	0.501	40	115	-1.1%	-35.9%	0.629	0.358
Human Soft Holding	3.300	0.060	1.85%	0.100	0.100	50	401	0.8%	2.4%	1.210	0.996
Boubyan Bank	0.805	0.014	1.77%	0.817	0.803	66	3,009	5.2%	13.0%	0.965	0.681
Alafco Aviation Lease and Finance	0.174	0.003	1.75%	0.187	0.205	52	166	0.0%	-20.2%	0.256	0.167
Warba Bank	0.230	0.003	1.32%	0.239	0.262	56	460	4.1%	-16.1%	0.298	0.216
Mabane Co.	0.855	0.011	1.30%	0.842	0.810	46	1,062	-0.9%	14.3%	0.910	0.717
Boubyan Petrochemical	0.797	0.007	0.89%	0.881	0.939	20	416	-4.0%	-6.5%	1.125	0.769

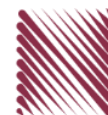
Bottom 5 Performrs (Today's Price Change)

Integrated Holding	0.347	0.002	0.58%	0.391	0.400	29	88	-8.7%	-6.2%	0.478	0.335
Kuwait International Bank	0.189	0.001	0.53%	0.208	0.219	34	200	-4.5%	-9.8%	0.259	0.186
National Bank of Kuwait	1.016	0.003	0.30%	1.036	1.031	58	7,673	4.1%	7.0%	1.104	0.902
Ahli United Bank BSC	0.305	0.000	0.00%	0.305	0.284	50	3,400	0.0%	20.7%	0.336	0.240
Shamal Az-Zour Al-Oula Power & Water	0.190	0.000	0.00%	0.198	0.213	27	209	-2.6%	-16.7%	0.247	0.188



DAILY MARKET COVERAGE REPORT

NIC MENA SECURITIES - RESEARCH AND STUDIES DEP



Banking Sector	Price			Valuation Multiples			MKT Cap	Price Performance		Trading Indicators		ROE	ROA	52 Week (KD)		MKT Cap
	Company	Close (KD)	Day Δ	Day % Δ	PBV(X)	PE(X)		DY%	Mn KD	MTD(%)	YTD (%)			Value (Mn KD)	(Mn Shrs)	
National Bank of Kuwait	1.016	0.003	0.30%	1.97	18.37	2.40	7,673	4.1%	7.0%	3.78	3.72	10.9%	1.4%	1.104	0.902	16.93%
Kuwait Finance House	0.790	0.025	3.27%	3.38	26.83	1.43	10,453	-6.1%	4.4%	16.64	21.17	12.8%	1.6%	1.039	0.720	23.07%
Ahli United Bank BSC	0.305	0.000	0.00%	2.04	17.93	2.72	3,400	0.0%	20.7%	0.00	0.00	11.3%	1.6%	0.336	0.240	7.50%
Boubyan Bank	0.805	0.014	1.77%	3.25	53.07	0.57	3,009	5.2%	13.0%	0.93	1.16	6.7%	0.8%	0.965	0.681	6.64%
Commercial Bank of Kuwait	0.486	0.000	0.00%	1.15	12.11	4.12	963	0.2%	-3.0%	0.00	0.00	9.9%	1.9%	0.549	0.456	2.12%
Gulf Bank	0.330	0.009	2.80%	1.54	18.68	2.08	1,045	10.0%	24.2%	1.56	4.77	8.5%	0.8%	0.385	0.227	2.31%
Burgan Bank	0.214	0.005	2.39%	0.79	18.12	2.28	703	-3.6%	-10.5%	0.36	1.69	4.3%	0.7%	0.307	0.205	1.55%
Ahli United Bank	0.259	0.003	1.17%	0.89	23.87	1.86	583	-0.8%	-12.0%	0.04	0.17	3.7%	0.7%	0.324	0.250	1.29%
Warba Bank	0.230	0.003	1.32%	1.26	27.25	0.00	460	4.1%	-16.1%	1.37	6.00	4.8%	0.6%	0.298	0.216	1.02%
Al Ahli Bank of Kuwait	0.309	0.024	8.42%	0.92	22.86	1.67	547	4.7%	27.7%	0.17	0.58	4.0%	0.6%	0.355	0.216	1.21%
Kuwait International Bank	0.189	0.001	0.53%	0.60	30.05	2.05	200	-4.5%	-9.8%	2.46	13.02	1.9%	0.4%	0.259	0.186	0.44%
Total Banking Sector - 11 Companies							29,036			27.32	52.27					64.08%

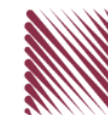
Basic Materials	Price			Valuation Multiples			MKT Cap	Price Performance		Trading Indicators		ROE	ROA	52 Week (KD)		MKT Cap
	Company	Close (KD)	Day Δ	Day % Δ	PBV(X)	PE(X)		DY%	Mn KD	MTD(%)	YTD (%)			Value (Mn KD)	(Mn Shrs)	
Qurain Petrochemical Industries	0.218	0.008	3.81%	0.54	8.34	8.57	234	-19.56%	-37.18%	0.36	1.68	6.4%	5.2%	0.403	0.210	0.52%
Boubyan Petrochemical	0.797	0.007	0.89%	1.63	9.02	7.59	416	-3.98%	-6.46%	0.14	0.18	19.1%	10.1%	1.125	0.769	0.92%
Al Kout Industrial Projects	0.390	0.000	0.00%	1.40	4.93	10.26	39	-3.94%	-21.37%	0.00	0.00	30.5%	20.1%	0.545	0.390	0.09%
Kuwait Foundry	0.294	0.000	0.00%	1.22	12.53	0.00	21	1.38%	-20.33%	0.00	0.00	10.7%	10.3%	0.424	0.260	0.05%
Total Basic Materials - 4 Companies							710			0.50	1.86					1.57%

Consumer Goods	Price			Valuation Multiples			MKT Cap	Price Performance		Trading Indicators		ROE	ROA	52 Week (KD)		MKT Cap
	Company	Close (KD)	Day Δ	Day % Δ	PBV(X)	PE(X)		DY%	Mn KD	MTD(%)	YTD (%)			Value (Mn KD)	(Mn Shrs)	
Mezzan Holding	0.370	0.008	2.21%	1.08	37.91	4.33	115	-1.1%	-35.9%	0.41	1.12	2.8%	1.3%	0.629	0.358	0.25%
Livestock Transport and Trading	0.115	-0.003	-2.54%	0.71	NM	0.00	24	-4.2%	-36.8%	0.00	0.01	-14.5%	-8.2%	0.196	0.114	0.05%
Total Consumer Goods - 2 Companies							139			0.41	1.12					0.31%

Consumer Services	Price			Valuation Multiples			MKT Cap	Price Performance		Trading Indicators		ROE	ROA	52 Week (KD)		MKT Cap
	Company	Close (KD)	Day Δ	Day % Δ	PBV(X)	PE(X)		DY%	Mn KD	MTD(%)	YTD (%)			Value (Mn KD)	(Mn Shrs)	
Jazeera Airways	1.700	-0.002	-0.12%	12.29	13.75	2.70	374	2.7%	31.8%	0.87	0.51	164.8%	12.1%	2.099	0.922	0.83%
Kuwait National Cinema	0.850	0.000	0.00%	1.04	8.28	3.53	79	-4.5%	-3.6%	0.00	0.00	13.3%	6.1%	0.933	0.850	0.17%
Oula Fuel Marketing	0.141	-0.005	-3.42%	0.87	15.21	3.42	57	-2.8%	-9.6%	0.03	0.23	5.6%	2.9%	0.178	0.140	0.13%
Al Soor Fuel Marketing	0.149	0.000	0.00%	0.88	19.01	3.36	60	-0.7%	-3.9%	0.00	0.03	4.8%	3.6%	0.175	0.142	0.13%
Sultan Center Food Products	0.110	0.004	3.77%	0.63	0.88	0.00	31	-4.3%	-47.6%	0.02	0.16	74.2%	12.2%	0.269	0.103	0.07%
Jiyad Holding	0.024	0.001	3.02%	0.27	NM	0.00	4	-10.5%	-70.4%	0.17	6.89	-16.2%	-10.9%	0.099	0.015	0.01%
IFA Hotels and Resorts	0.026	0.001	1.96%	3.43	173.33	0.00	17	-6.1%	-51.4%	0.09	3.31	2.0%	0.4%	0.073	0.025	0.04%
Kuwait Resorts	0.076	0.001	0.93%	0.49	10.65	3.93	15	-2.6%	-21.6%	0.00	0.04	4.8%	4.2%	0.110	0.067	0.03%
Future Kid Entertainment and Real Estate	0.110	0.002	1.85%	0.95	9.62	0.00	12	0.9%	39.8%	0.00	0.01	10.4%	4.7%	0.130	0.074	0.03%
Al Eid Food	0.236	0.006	2.61%	1.86	14.35	2.97	40	6.8%	2.3%	0.07	0.29	13.5%	10.1%	0.304	0.207	0.09%
Kuwait Hotels	0.160	0.000	0.00%	2.01	18.52	3.13	9	-13.0%	128.6%	0.00	0.00	11.1%	7.4%	0.201	0.070	0.02%
Palms Agro Production	0.077	0.000	0.00%	0.78	NM	0.00	4	0.0%	12.3%	0.00	0.00	-13.8%	-10.9%	0.090	0.043	0.01%
ALI ALGanim	0.792	0.001	0.13%	3.66	12.42	0.00	220	0.9%	nm	0.50	0.64	27.8%	10.9%	0.966	0.750	0.49%
Total Consumer Services - 13 Companies							921			1.75	12.11					2.03%

DAILY MARKET COVERAGE REPORT

NIC MENA SECURITIES - RESEARCH AND STUDIES DEP



Financial Services	Price			Valuation Multiples			MKT Cap	Price Performance		Trading Indicators		ROE	ROA	52 Week (KD)		MKT Cap
	Company	Close (KD)	Day Δ	Day % Δ	PBV(X)	PE(X)		DY%	Mn KD	MTD (%)	YTD (%)			Value (Mn KD)	(Mn Shrs)	
Egypt Kuwait Holding	0.388	0.004	1.04%	2.18	5.91	5.56	437	1.0%	-8.5%	0.03	0.07	37.1%	17.5%	0.465	0.353	0.96%
Kuwait Projects Company Holding	0.117	0.004	3.54%	0.62	300.00	4.42	286	-12.0%	-17.6%	0.21	1.82	0.2%	0.1%	0.215	0.112	0.63%
National Industries Group Holding	0.223	0.010	4.69%	0.94	5.13	5.22	481	-2.6%	-7.5%	1.73	7.83	15.2%	6.5%	0.314	0.207	1.06%
Boursa Kuwait Securities Co	2.175	0.057	2.69%	7.49	23.26	3.07	437	4.6%	7.7%	0.27	0.12	33.9%	22.2%	2.870	1.800	0.96%
GFH Financial Group	0.077	0.003	3.49%	0.89	9.55	4.88	268	-0.9%	-21.7%	0.97	12.71	9.3%	1.2%	0.109	0.068	0.59%
National Investments	0.238	0.009	3.93%	0.95	8.90	19.65	190	3.0%	8.7%	0.77	3.18	10.9%	8.9%	0.475	0.200	0.42%
Tamdeen Investment	0.530	0.030	6.00%	0.61	13.71	2.00	180	11.6%	39.8%	0.00	0.00	4.9%	3.8%	0.530	0.309	0.40%
Alimtiq Investment Group	0.074	0.002	2.78%	0.43	NM	12.50	76	-2.0%	-37.3%	0.05	0.70	-1.0%	-0.1%	0.140	0.069	0.17%
Commercial Facilities	0.171	-0.001	-0.58%	0.55	6.33	8.72	87	-0.6%	-17.0%	0.03	0.15	8.8%	5.0%	0.228	0.165	0.19%
Aayan Leasing and Investment	0.114	0.005	4.59%	0.87	11.69	0.00	76	1.8%	-31.1%	0.90	8.01	7.7%	5.8%	0.204	0.104	0.17%
Kuwait Investment	0.126	0.002	1.61%	0.61	7.30	20.16	69	-2.3%	-55.2%	0.64	5.05	8.1%	4.6%	0.317	0.113	0.15%
Noor Financial Investment	0.175	0.002	1.16%	1.08	4.89	2.77	89	-2.8%	-31.2%	0.01	0.04	22.7%	16.0%	0.319	0.163	0.20%
Arzan Financial Group for Financing and Investmei	0.116	0.000	0.00%	0.78	7.28	2.08	93	-4.1%	-25.4%	0.02	0.17	11.3%	8.2%	0.180	0.109	0.21%
Kuwait Financial Centre	0.109	0.005	4.81%	0.53	8.25	9.16	55	-9.2%	-36.8%	0.02	0.16	6.9%	4.0%	0.197	0.101	0.12%
Gulf Investment House	0.404	0.018	4.66%	3.85	NM	0.00	164	-1.0%	34.7%	0.00	0.01	-3.0%	-2.0%	0.422	0.217	0.36%
Arabi Group Holdings	0.265	0.000	0.00%	1.58	NM	0.00	44	-1.5%	-8.9%	0.16	0.61	-29.0%	-4.0%	0.499	0.142	0.10%
Kuwait and Middle East Financial Investment	0.110	0.000	0.00%	0.95	12.81	6.36	24	-4.3%	-26.7%	0.00	0.00	7.5%	5.2%	0.175	0.105	0.05%
Privatization Holding	0.035	0.000	-0.58%	0.29	NM	0.00	21	-4.2%	-37.0%	0.04	1.06	-7.1%	-5.5%	0.070	0.032	0.05%
Asiya Capital Investments	0.038	0.000	0.79%	0.35	2.11	0.00	30	-5.0%	-26.5%	0.04	1.05	17.9%	17.6%	0.071	0.037	0.07%
Umm Al Qaiwain General Investment Co	0.093	0.000	0.00%	0.57	4.97	5.38	34	0.0%	6.7%	0.00	0.00	12.0%	10.0%	0.108	0.077	0.07%
Securities House	0.059	0.002	3.16%	0.59	10.05	0.00	25	3.0%	-40.4%	0.08	1.40	5.8%	5.0%	0.114	0.052	0.06%
Kamco Investment	0.096	-0.002	-2.04%	0.53	3.80	10.20	33	-2.9%	-25.6%	0.04	0.37	14.5%	6.9%	0.167	0.089	0.07%
First Investment	0.073	0.001	0.83%	0.64	104.43	0.00	33	2.1%	-13.2%	0.07	1.00	0.6%	0.7%	0.104	0.068	0.07%
Inovest BSC Public	0.076	0.001	1.88%	0.00	NM	0.00	23	-3.1%	-35.7%	0.06	0.76	2.7%	1.7%	0.189	0.070	0.05%
Coast Investment and Development	0.078	0.003	4.56%	0.77	10.66	6.71	36	-2.0%	-25.8%	0.02	0.27	7.2%	6.8%	0.126	0.066	0.08%
Al Madar Investment	0.101	0.000	0.00%	0.95	59.06	0.00	21	0.7%	-15.1%	0.00	0.00	1.6%	1.7%	0.128	0.083	0.05%
Bayan Investment	0.035	0.000	0.00%	0.31	NM	0.00	13	0.0%	-28.8%	0.00	0.00	-0.5%	-0.6%	0.060	0.031	0.03%
Al Manar Financing and Leasing	0.053	-0.003	-5.00%	0.52	17.33	0.00	14	0.8%	-14.6%	0.00	0.00	2.9%	2.3%	0.079	0.049	0.03%
Manazel Holding	0.027	0.001	4.23%	0.59	9.28	0.00	12	-4.6%	-47.1%	0.01	0.46	6.2%	2.0%	0.060	0.025	0.03%
Kuwait Finance and Investment	0.065	0.009	17.00%	0.48	28.13	0.00	20	1.1%	-25.5%	0.00	0.06	1.7%	1.6%	0.104	0.055	0.04%
National International Holding	0.104	0.004	4.00%	0.60	7.77	4.85	23	-3.7%	-29.5%	0.05	0.45	7.6%	5.3%	0.167	0.091	0.05%
Osoul Investment	0.075	0.000	0.00%	0.69	NM	14.12	9	3.6%	-8.2%	0.02	0.28	-4.4%	-4.0%	0.118	0.062	0.02%
UniCap Investment and Finance	0.053	0.000	0.00%	0.59	62.35	0.00	12	-8.1%	-22.6%	0.00	0.00	1.9%	0.2%	0.097	0.050	0.03%
Amar Finance and Leasing	0.064	0.003	4.95%	0.59	3.45	0.00	12	-0.2%	-2.9%	0.00	0.00	18.6%	17.3%	0.097	0.058	0.03%
Gulf North Africa Holding	0.144	0.009	6.67%	1.72	59.40	0.00	20	6.7%	67.2%	0.24	1.72	3.0%	2.4%	0.141	0.057	0.04%
International Financial Advisors	0.090	0.001	1.36%	0.58	35.98	0.00	22	-1.0%	-20.7%	0.00	0.00	1.9%	0.7%	0.129	0.082	0.05%
Credit Rating and Collection	0.017	0.000	0.00%	0.59	NM	0.00	3	-0.6%	-57.5%	0.00	0.00	-0.4%	-0.3%	0.069	0.014	0.01%
Ekttitab Holding	0.011	0.001	4.85%	0.35	NM	0.00	3	-1.8%	-49.3%	0.00	0.45	-16.8%	-12.9%	0.024	0.009	0.01%
Kuwait Syrian Holding Co	0.034	0.000	-0.88%	0.33	5.44	0.00	6	-8.9%	-21.3%	0.00	0.01	8.7%	6.2%	0.060	0.026	0.01%
Warba Capital Holding	0.088	-0.004	-4.25%	0.97	NM	0.00	9	-10.3%	2.2%	0.03	0.37	-0.8%	-0.7%	0.128	0.070	0.02%
National Consumer Holding	0.109	0.002	1.87%	4.94	NM	0.00	33	-2.7%	-9.1%	2.46	22.46	-8.0%	-7.5%	0.184	0.097	0.07%
Al Deera Holding	0.175	0.005	2.94%	1.17	8.82	0.00	16	4.8%	-12.5%	0.00	0.02	12.5%	6.5%	0.200	0.145	0.04%
AL Safat Investment	0.093	0.001	1.20%	1.19	NM	0.00	26	-16.9%	-23.6%	0.83	8.85	-1.8%	-1.6%	0.270	0.091	0.06%
Gulf Franchising Holding	0.077	0.000	0.00%	1.51	NM	0.00	3	-7.1%	-19.7%	0.00	0.00	-5.7%	-1.6%	0.148	0.063	0.01%
Total Financial Services - 44 Companies							3,567			9.80	81.65					7.87%

DAILY MARKET COVERAGE REPORT

NIC MENA SECURITIES - RESEARCH AND STUDIES DEP

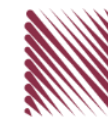


Health Care	Price			Valuation Multiples			MKT Cap	Price Performance		Trading Indicators		ROE	ROA	52 Week (KD)		MKT Cap
	Company	Close (KD)	Day Δ	Day % Δ	PBV(X)	PE(X)		DY%	Mn KD	MTD(%)	YTD (%)			Value (Mn KD)	(Mn Shrs)	
Al-Maidan Clinic for Oral Health Services	0.632	0.000	0.00%	2.51	13.90	0.00	142	0.0%	-54.1%	0.00	0.00	19.4%	12.5%	1.400	0.556	0.31%
Advanced Technology	0.520	0.000	0.00%	1.16	11.23	2.88	78	0.0%	0.4%	0.00	0.00	10.7%	2.1%	0.595	0.450	0.17%
Yiaco Medical	0.450	0.000	0.00%	43.51	NM	0.00	8	0.0%	2.7%	0.00	0.00	-161.7%	-4.7%	0.480	0.399	0.02%
Total Health Care - 3 Companies							228			0.00	0.00					0.50%

Industrials	Price			Valuation Multiples			MKT Cap	Price Performance		Trading Indicators		ROE	ROA	52 Week (KD)		MKT Cap
	Company	Close (KD)	Day Δ	Day % Δ	PBV(X)	PE(X)		DY%	Mn KD	MTD(%)	YTD (%)			Value (Mn KD)	(Mn Shrs)	
Agility Public Warehousing	0.722	0.047	6.96%	1.23	55.45	2.47	1,824	8.1%	-8.3%	11.51	16.24	2.7%	2.2%	1.062	0.634	4.02%
Human Soft Holding	3.300	0.060	1.85%	3.65	7.63	12.35	401	0.8%	2.4%	0.27	0.08	48.7%	39.9%	3.704	3.006	0.89%
Alafco Aviation Lease and Finance	0.174	0.003	1.75%	0.65	NM	0.00	166	0.0%	-20.2%	0.06	0.36	-15.9%	-3.4%	0.256	0.167	0.37%
Kuwait Cement	0.197	0.001	0.51%	0.72	NM	2.55	140	-4.8%	-14.7%	0.01	0.03	-1.1%	-0.7%	0.295	0.194	0.31%
Gulf Cable and Electrical Industries	1.130	0.037	3.39%	1.05	10.48	5.49	235	5.6%	29.7%	0.21	0.18	11.0%	9.0%	1.850	0.840	0.52%
Integrated Holding	0.347	0.002	0.58%	1.43	26.53	2.90	88	-8.7%	-6.2%	0.24	0.70	5.4%	3.4%	0.478	0.335	0.19%
Kuwait Portland Cement	0.785	0.002	0.26%	1.10	16.42	8.94	79	-3.6%	-19.9%	0.00	0.01	6.8%	5.3%	1.240	0.751	0.17%
Educational Holding Group	2.630	0.000	0.00%	4.47	9.99	20.26	55	-12.3%	-34.3%	0.00	0.00	30.0%	17.2%	5.073	2.462	0.12%
United Projects for Aviation Services	0.203	0.000	0.00%	0.74	72.50	0.00	77	-8.1%	-18.1%	0.00	0.01	1.0%	0.6%	0.318	0.182	0.17%
Heavy Engineering Industries and Shipbuilding	0.628	0.007	1.13%	1.68	20.75	3.22	113	-2.5%	23.4%	0.55	0.87	8.2%	3.2%	0.960	0.442	0.25%
National Industries	0.200	0.000	0.00%	0.80	11.66	5.00	70	10.5%	3.6%	0.00	0.00	6.8%	5.1%	0.260	0.181	0.15%
ACICO Industries	0.083	0.000	0.36%	0.38	NM	0.00	27	-5.6%	-40.2%	0.09	1.05	-1.9%	-0.5%	0.208	0.076	0.06%
Kuwait Company for Process Plant Construction a	0.299	-0.004	-1.32%	1.20	19.38	8.17	35	-0.7%	-37.0%	0.01	0.02	6.1%	3.5%	0.522	0.286	0.08%
Ras Al Khaimah for White Cement and Constructi	0.138	0.000	0.00%	1.23	27.37	6.01	69	-6.1%	9.5%	0.00	0.00	4.6%	3.7%	0.175	0.092	0.15%
Combined Group Contracting	0.395	0.001	0.25%	1.47	6.05	6.35	68	-1.0%	11.6%	0.03	0.07	26.3%	5.8%	0.500	0.308	0.15%
Kuwait and Gulf Link Transport	0.055	-0.002	-3.34%	0.33	2.97	0.00	15	-2.7%	-19.4%	0.00	0.09	11.6%	2.6%	0.106	0.053	0.03%
Shuaiba Industrial	0.154	0.000	0.00%	0.85	12.81	7.79	15	-4.9%	-31.6%	0.00	0.00	6.6%	5.4%	0.310	0.137	0.03%
National Cleaning	0.037	0.002	6.34%	0.29	NM	0.00	9	8.8%	-35.1%	0.00	0.00	-13.9%	-4.1%	0.080	0.031	0.02%
Fujairah Cement Industries	0.039	0.000	1.03%	0.24	NM	0.00	14	-0.3%	-27.0%	0.00	0.00	-12.7%	-6.3%	0.069	0.028	0.03%
Mubarrad Holding	0.074	0.000	-0.53%	0.58	6.29	6.68	12	-3.3%	-32.4%	0.00	0.06	9.3%	8.2%	0.130	0.071	0.03%
Specialities Group Holding	0.086	0.003	3.37%	0.46	9.33	8.19	14	2.1%	-31.0%	0.01	0.09	5.0%	3.6%	0.157	0.076	0.03%
Salbookh Trading	0.020	0.000	1.52%	0.60	NM	0.00	2	6.4%	-53.9%	0.00	0.11	-51.7%	-28.6%	0.072	0.016	0.00%
Metal and Recycling	0.066	-0.001	-1.49%	0.85	NM	0.00	6	-10.8%	-30.5%	0.00	0.00	-12.0%	-2.0%	0.136	0.061	0.01%
Equipment Holding	0.033	0.000	0.00%	0.52	NM	0.00	3	-4.1%	-40.2%	0.00	0.00	-11.1%	-3.2%	0.079	0.030	0.01%
Jassim Transport & Stevedoring	0.329	0.000	0.00%	1.11	14.35	4.86	49	0.0%	-19.2%	0.01	0.12	8.0%	6.3%	0.428	0.307	0.11%
Total Industrials - 24 Companies							3,587			13.01	20.08					7.92%

DAILY MARKET COVERAGE REPORT

NIC MENA SECURITIES - RESEARCH AND STUDIES DEP



Insurance	Price			Valuation Multiples			MKT Cap	Price Performance		Trading Indicators		ROE	ROA	52 Week (KD)		MKT Cap
Company	Close (KD)	Day Δ	Day % Δ	PBV(X)	PE(X)	DY%	Mn KD	MTD(%)	YTD (%)	Value (Mn KD)	(Mn Shrs)	(%)	(%)	High	Low	%
Gulf Insurance Group	1.015	0.000	0.00%	1.18	4.35	10.44	288	2.0%	-5.1%	0.00	0.00	28.6%	5.5%	1.200	0.867	0.64%
Al Ahleia Insurance	0.535	-0.028	-4.97%	0.89	7.38	6.22	116	12.4%	5.9%	0.00	0.00	12.5%	4.4%	0.612	0.453	0.26%
Kuwait Insurance	0.470	0.000	0.00%	0.71	7.29	7.02	87	4.4%	21.4%	0.01	0.02	10.4%	6.1%	0.497	0.379	0.19%
Kuwait Reinsurance	0.295	0.000	0.00%	1.07	10.42	1.55	70	0.0%	16.9%	0.00	0.00	10.8%	3.4%	0.373	0.217	0.16%
Bahrain Kuwait Insurance	0.191	0.000	0.00%	1.33	11.98	8.44	29	0.0%	0.0%	0.00	0.00	11.0%	2.1%	0.191	0.191	0.06%
Warba Insurance and Reinsurance	0.127	0.008	6.72%	0.54	8.83	8.40	21	-1.6%	-20.1%	0.00	0.02	6.2%	2.1%	0.173	0.119	0.05%
First Takaful Insurance	0.046	0.000	0.00%	0.61	287.50	0.00	5	-3.2%	-8.0%	0.00	0.00	0.2%	0.1%	0.081	0.034	0.01%
Wethaq Takaful Insurance	0.037	0.000	0.00%	0.33	19.37	0.00	4	3.6%	-27.3%	0.00	0.00	1.7%	1.7%	0.102	0.024	0.01%
Total Insurance - 8 Companies							620			0.01	0.04					1.37%

Energy	Price			Valuation Multiples			MKT Cap	Price Performance		Trading Indicators		ROE	ROA	52 Week (KD)		MKT Cap
Company	Close (KD)	Day Δ	Day % Δ	PBV(X)	PE(X)	DY%	Mn KD	MTD(%)	YTD (%)	Value (Mn KD)	(Mn Shrs)	(%)	(%)	High	Low	%
National Petroleum Services	0.727	0.061	9.16%	1.84	13.03	5.26	71	-3.1%	-11.3%	0.01	0.01	14.5%	11.6%	0.880	0.625	0.16%
Independent Petroleum Group	0.431	0.000	0.00%	0.79	14.43	6.96	78	-8.9%	-26.7%	0.00	0.00	5.5%	1.0%	0.614	0.368	0.17%
Burgan for Well Drilling Trading and Maintenance	0.122	0.002	1.67%	0.42	9.58	2.43	30	6.1%	-14.7%	0.02	0.13	4.4%	1.4%	0.172	0.100	0.07%
Energy House Holding	0.022	0.001	6.83%	0.79	NM	0.00	16	14.1%	-65.3%	0.00	0.01	-1.4%	-2.5%	0.086	0.019	0.04%
Gulf Petroleum Investment	0.015	-0.001	-3.23%	0.21	NM	0.00	7	-7.4%	-38.8%	0.02	1.51	-4.0%	-2.6%	0.031	0.013	0.02%
Senergy Holding	0.040	0.000	-0.25%	0.80	47.38	0.00	8	-0.5%	-18.8%	0.00	0.00	1.7%	1.4%	0.063	0.036	0.02%
Total Energy - 6 Companies							209			0.05	1.67					0.46%

DAILY MARKET COVERAGE REPORT

NIC MENA SECURITIES - RESEARCH AND STUDIES DEP



Real Estate	Price		Valuation Multiples				MKT Cap	Performance		Trading Indicators		ROE	ROA	2 Week (KD)		MKT Cap
Company	Close (KD)	Day Δ	Day % Δ	PBV(X)	PE(X)	DY%	Mn KD	MTD(%)	YTD (%)	Value (Mn KD)	(Mn Shrs)	(%)	(%)	High	Low	%
Mabane Co.	0.855	0.011	1.30%	1.95	18.09	1.56	1,062	-0.9%	14.3%	0.65	0.77	11.2%	5.4%	0.910	0.717	2.34%
Salhia Real Estate	0.457	0.010	2.24%	1.52	19.53	3.20	235	2.5%	-9.3%	0.51	1.13	7.9%	3.2%	0.578	0.428	0.52%
Commercial Real Estate	0.104	0.004	4.00%	0.63	10.69	5.00	183	4.9%	-16.8%	0.46	4.53	6.2%	3.3%	0.140	0.094	0.40%
National Real Estate	0.137	0.004	3.01%	0.77	1.24	0.00	255	2.2%	-25.6%	0.31	2.25	64.5%	38.6%	0.212	0.125	0.56%
Tamdeen Real Estate	0.317	0.009	2.92%	0.61	7.30	3.25	127	-2.5%	-6.5%	0.00	0.00	9.2%	3.9%	0.375	0.296	0.28%
Kuwait Real Estate	0.106	0.004	3.92%	0.77	12.91	2.86	98	5.0%	-39.0%	0.75	7.22	6.0%	2.5%	0.187	0.097	0.22%
United Real Estate	0.075	0.000	-0.13%	0.47	233.75	0.00	80	-3.7%	-0.8%	0.00	0.00	0.2%	-0.1%	0.121	0.064	0.18%
First Dubai for Real Estate Development	0.046	0.001	1.31%	0.45	31.07	0.00	34	0.9%	-56.0%	0.07	1.57	1.5%	1.2%	0.120	0.044	0.08%
Al Mazaya Holding	0.047	0.002	4.92%	0.48	42.64	0.00	30	-0.2%	-38.7%	0.18	3.88	1.1%	0.6%	0.089	0.043	0.07%
Ajial Real Estate Entertainment	0.282	0.000	0.00%	0.42	17.40	1.77	55	2.5%	-7.2%	0.00	0.00	2.4%	2.0%	0.345	0.268	0.12%
Injazzat Real Estate Development	0.079	0.003	3.68%	0.47	6.70	6.58	27	-6.2%	-21.2%	0.00	0.03	7.0%	3.6%	0.114	0.070	0.06%
Munshaat Real Estate Projects	0.062	0.000	0.00%	1.91	11.72	0.00	20	-11.4%	-13.3%	0.00	0.00	17.4%	1.5%	0.081	0.052	0.04%
Aayan Real Estate	0.063	0.001	0.81%	0.44	60.10	0.00	26	2.0%	-29.4%	0.02	0.33	0.7%	1.4%	0.105	0.056	0.06%
Al Argan International Real Estate	0.088	0.004	4.17%	0.29	32.05	0.00	22	15.1%	-25.2%	0.00	0.06	0.9%	0.3%	0.144	0.073	0.05%
Al-Enmaa Real Estate	0.055	0.005	10.89%	0.60	NM	0.00	25	-19.0%	-26.2%	0.16	3.01	-5.9%	NM	0.091	0.050	0.05%
Arkan Al Kuwait Real Estate	0.125	0.000	0.00%	0.88	12.18	4.80	31	2.5%	0.8%	0.00	0.00	7.4%	2.3%	0.152	0.113	0.07%
Kuwait Business Town Real Estate	0.051	0.004	8.28%	0.64	14.21	0.00	29	2.6%	-37.3%	0.05	1.08	3.8%	2.8%	0.100	0.046	0.06%
Dalqan Real Estate	0.215	-0.001	-0.46%	1.93	199.07	0.00	13	0.5%	-0.9%	0.02	0.10	1.0%	1.0%	0.280	0.195	0.03%
Sokouk Holding	0.023	0.000	0.43%	0.54	NM	0.00	13	-14.1%	-29.1%	0.00	0.10	-2.9%	-1.7%	0.038	0.020	0.03%
Tijara and Realestate Investment	0.050	0.002	3.99%	0.45	7.58	6.30	18	4.2%	-19.0%	0.08	1.55	6.0%	3.2%	0.089	0.044	0.04%
Al-Arabiya Real Estate	0.031	0.000	0.33%	0.37	NM	0.00	15	0.7%	-27.0%	0.01	0.50	-23.1%	-7.3%	0.052	0.026	0.03%
Aqar Real Estate Investments	0.058	0.000	0.17%	0.48	18.53	5.76	14	-1.5%	-26.4%	0.00	0.03	2.6%	2.1%	0.097	0.052	0.03%
Mashaer Holding	0.053	0.000	0.00%	0.62	NM	0.00	9	-1.3%	-24.9%	0.00	0.00	-6.5%	-3.2%	0.086	0.049	0.02%
Dar Al Thuraya Real Estate	0.170	0.000	0.00%	1.47	25.07	0.00	25	0.0%	61.9%	0.00	0.00	6.0%	5.3%	0.172	0.092	0.05%
Osos Holding Group	0.105	0.001	0.96%	0.92	8.36	9.62	11	8.2%	0.0%	0.00	0.01	11.2%	7.1%	0.147	0.094	0.02%
Al Massaleh Real Estate	0.033	0.000	0.00%	0.54	NM	0.00	8	-20.7%	-36.7%	0.00	0.03	-15.4%	-3.2%	0.060	0.030	0.02%
Kuwait Remal Real Estate	0.011	0.000	1.87%	1.40	NM	0.00	3	-4.4%	-42.9%	0.00	0.26	-110.3%	-12.4%	0.024	0.010	0.01%
Kuwait Real Estate Holding	0.036	0.000	0.00%	0.68	13.12	0.00	7	-2.2%	-31.4%	0.00	0.00	5.1%	1.7%	0.059	0.032	0.02%
Taameer Real Estate Investment	0.020	0.000	-0.50%	0.32	NM	0.00	4	-2.4%	-51.6%	0.01	0.47	-6.5%	-4.9%	0.054	0.018	0.01%
Sanam Real Estate	0.060	-0.001	-1.96%	0.79	26.83	0.00	7	1.0%	-23.8%	0.00	0.00	2.9%	2.8%	0.100	0.053	0.02%
Mena Real Estate	0.031	0.000	0.00%	0.27	NM	0.00	4	-6.7%	-38.6%	0.00	0.10	-6.8%	-5.4%	0.105	0.030	0.01%
Al Masaken International Real Estate Developmen	0.030	-0.001	-2.60%	0.48	NM	0.00	3	6.4%	-31.7%	0.00	0.00	-1.1%	-0.4%	0.069	0.028	0.01%
Real Estate Trade Centers	0.049	0.000	-0.20%	0.27	20.46	0.00	7	-14.1%	-30.1%	0.00	0.00	1.3%	1.1%	0.123	0.043	0.01%
Land United Real Estate	0.068	0.000	0.00%	0.60	NM	0.00	10	0.0%	-27.6%	0.00	0.00	-4.8%	-1.5%	0.144	0.052	0.02%
Total Real Estate - 34 Companies							2,511			3.31	29.02					5.54%

DAILY MARKET COVERAGE REPORT

NIC MENA SECURITIES - RESEARCH AND STUDIES DEP



	Close (KD)	Day Δ	Day % Δ	PBV(X)	PE(X)	DY%	Mn KD	MTD(%)	YTD (%)	Value (Mn KD)	(Mn Shrs)	(%)	(%)	High	Low	%
Automated Systems	0.083	0.001	1.23%	0.73	NM	0.00	8	1.9%	-12.2%	0.00	0.02	-3.4%	-3.0%	0.116	0.074	0.02%
Total Technology - 1 Companies				0.73	NM	0.0%	8			0.00	0.02	-3.40%	-2.96%			0.02%

Telecom	Price			Valuation Multiples			MKT Cap	Price Performance		Trading Indicators		ROE	ROA	52 Week (KD)		MKT Cap
Company	Close (KD)	Day Δ	Day % Δ	PBV(X)	PE(X)	DY%	Mn KD	MTD(%)	YTD (%)	Value (Mn KD)	(Mn Shrs)	(%)	(%)	High	Low	%
Mobile Telecommunications	0.588	0.015	2.62%	2.14	13.90	5.76	2,544	-2.1%	-1.2%	2.41	4.13	15.6%	4.3%	0.698	0.564	5.62%
Kuwait Telecommunications	0.556	0.006	1.09%	2.50	12.79	5.45	555	0.4%	30.1%	0.17	0.30	20.1%	10.9%	1.189	0.418	1.23%
National Mobile Telecommunications	0.889	0.018	2.07%	0.85	13.47	4.02	446	-3.4%	42.5%	0.01	0.01	6.2%	3.6%	1.280	0.615	0.98%
AAN Digital Services	0.016	0.000	0.00%	0.60	NM	0.00	14	0.0%	-2.4%	0.00	0.00	NM	NM	0.020	0.016	0.03%
Hayat Communications	0.054	-0.002	-3.78%	0.43	NM	0.00	5	-13.7%	-49.5%	0.00	0.02	-0.7%	-0.3%	0.124	0.052	0.01%
Telecom - 5 Companies							3,564			2.59	4.46					7.87%

Utilities	Price			Valuation Multiples			MKT Cap	Price Performance		Trading Indicators		ROE	ROA	52 Week (KD)		MKT Cap
Company	Close (KD)	Day Δ	Day % Δ	PBV(X)	PE(X)	DY%	Mn KD	MTD(%)	YTD (%)	Value (Mn KD)	(Mn Shrs)	(%)	(%)	High	Low	%
Shamal Az-Zour Al-Oula Power & Water	0.190	0.000	0.00%	2.14	14.55	9.47	209	-2.6%	-16.7%	0.06	0.34	19.1%	2.9%	0.247	0.188	0.46%
Total Utilities - 1 Companies							209			0.06	0.34					0.46%

Total Market 157 Companies				2.00	30.63	4.19	45,310			58.80	204.52					100%
-----------------------------------	--	--	--	-------------	--------------	-------------	---------------	--	--	--------------	---------------	--	--	--	--	-------------

End of Report

The information contained in this document is proprietary to NIC and is for use only by the persons to whom it is issued. This document is confidential and may not be distributed either in part or in whole without the express agreement of NIC. It is intended solely for the use of the individual or entity to whom it is addressed and others authorized to receive it.

Note : ROE and ROA is calculated based on LFY net profit & shareholders' equity and LFY Operating Profits & Total Assets

Sources : National Investments Company Research and Studies Departments, Boursa, Refinitiv.



شركة الاستثمار الوطنية
NATIONAL INVESTMENTS COMPANY

Sharq, Al Mutanabi Street, Khaleejia Tower | P.O. Box 25667, Safat 13117, Kuwait

T.: +965 2226 6666 | Fax: +965 2226 6793 | www.nic.com.kw